

THE APITOURIST'S GUIDE TO TANZANIA



2025

AUTHORS AND SUPPORTERS



Warren Steyn
Director of Beegreen Ltd.

Dr. Kathrin Krausa
Head of Research and
Education at Beegreen Ltd.

Dear fellow Apitourists,

the two of us are bee enthusiasts and live in Tanzania for many years. Warren, originally from South Africa, is a beekeeper since he was little. Kathrin moved to Tanzania from Germany and has studied stingless bees before shifting from academia to conservation and education. Together we run a Center for the Conservation of Bees through Research and Education: Beetopia (see page 37). In June 2025, we were commissioned to travel through Tanzania for a visit of various destinations that attract tourists with a special interest: bees. The result of this journey is 'TheApitourist's Guide to Tanzania'. We wish to invite you on an immersive journey into Tanzania's rich beekeeping culture. Karibu Tanzania!








COMMISSIONED AND SUPPORTED BY



Funded by
the European Union



Ministry of Natural Resources
and Tourism

Greetings from the Beekeeping Training Institute	1
Greetings from the Apimondia	2
Bees in Tanzania	3
Apiculture and Meliponiculture	5
Kiswahili for Apitourists	6
Apitourism	7
Safety Tips	8
Apitourism Highlights 	9
 Tanbees - Apiculture Museum	11
History and Honey - Kaole Ruins	13
Mbweni Meliponary	15
Kiwengwa Honeybee Farm	16
 Zanzibees - Apitherapy and Beetour	17
Pugu Kazimzumbwi Forest Reserve	19
Swahili Honey	21
Kijiji Cha Nyuki	22
 Honeyroad	23
 Beekeeping Training Institute	25
 Hadza - Hunter and Gatherer	27
Bee Haven Tanzania	29
Kambi ya Nyuki	30
 Elephants and Bees	31
Mama Asali	33
Tanzanian Wildlife Research Institute	34
Beewonders	35
Elinuru Foundation	36
 BEEtopia	37
Ngarony Bee Man	39
Kiswahili for Apitourists	40

GREETINGS FROM THE BEEKEEPING TRAINING INSTITUTE

"It is with great pride that I present this guidebook on Apitourism in Tanzania - an innovative fusion of two vital sectors: beekeeping and tourism.

Tanzania is renowned for its unparalleled biodiversity and profound cultural heritage. Beekeeping, an integral part of many Tanzanian communities for generations, contributes not only to livelihoods and food security but also to the preservation of our nation's rich ecosystems.

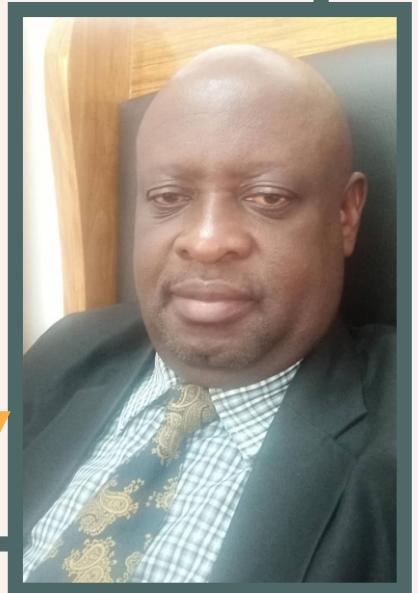
As one of Africa's leading honey producers, Tanzania's beekeeping sector is a testament to the symbiotic relationship between our people and our environment, particularly the vast Miombo woodlands that serve as a crucial source of high-quality honey.

Apitourism offers a unique window into this world, creating immersive, experiential journeys that go far beyond a typical safari. It connects visitors directly with the people, landscapes, and traditions that define our country

This guide invites you to step into the world of Tanzanian beekeepers, to learn about indigenous hive-making techniques, participate in a honey harvest, and savour the distinctive flavours of our forest honey.

Your journey contributes directly to the economic empowerment of rural communities, providing sustainable income for families and empowering women's groups who are at the heart of this industry. I commend all those who contributed to this guide, particularly the dedicated beekeepers and communities who have opened their doors to share their passion. I encourage readers to use this guide to discover a new side of Tanzania and to experience firsthand the sweet rewards of Apitourism"

Semu L. Daud
Principal Beekeeping Training Institute



GREETINGS FROM THE APIMONDIA



Dr. Jeff Pettis
Apimondia President

"Many people come to Tanzania for the wildlife parks, they come for the elephants and the lion, but there is so much more in Tanzania. One of that is the bees and their diversity. Go beyond the game park, go beyond the big wildlife and look at the nature, the bees and how they are important in pollination and our food supply."



Riccardo Jannoni-Sebastianini
Apimondia Secretary General

"This innovative and groundbreaking guide opens new horizons to the development of beekeeping in Tanzania and the whole African continent as it offers a unique and interesting insight into the country's rich beekeeping reality.

This guide is a cross-section of the range of bee-related activities available in the country. It has been conceived also to tell you that if you go to Tanzania to see the Big Five you stand an excellent opportunity to also discover small insects like the bees that are just as important.

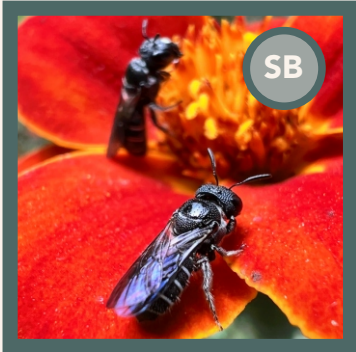
In going through this guide you will meet a gallery of motivated people involved in beekeeping that hold a wealth of information they proudly share on their bees and the features of the surrounding environment. You will be amazed by the intense interaction that is generated in the process and the vital role bees and people play in it.

Apitourism is gaining important ground and attention worldwide as a viable means of visiting countries to discover new dimensions of their natural environment and creating long-lasting nature-bound relationships.

Apitourism serves precisely this key paradigm. It allows people to discover a new country and its nature through the connection of bees and their unparalleled products. In this way important lessons are learnt for a lifetime.

I encourage you to enjoy reading this guide and make the most out of it in exploring Tanzania, being aware that in doing so you will be a pioneering active part of a wider movement aimed at expanding the knowledge of bees and beekeepers and the undivided respect we all owe them."

Tanzania is home to a diverse range of bee species, currently scientists at the Tanzania Wildlife Research Institute estimate that 800 to 1000 different bee species call East Africa home. The regions varied climates and landscapes - from coastal forests, savannahs to highland regions and rain forests - provide rich habitats for different types of bees:

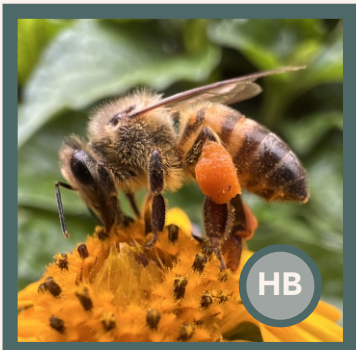


Solitary Bees (SB)- Unlike social bees, solitary bees do not live in colonies. Each female builds her own nest, often in soil, hollow stems, or dead wood. Common families of solitary bees are Halictidae and Megachilidae. Despite their ecological value, solitary bees are often overlooked due to their inconspicuous nature and non-defensive behavior.

Stingless Bees (M - Meliponini) - Tanzania is home to around ten species of stingless bees, locally known as "nyuki wadogo". These bees are smaller than honeybees and lack functional stingers. They live in social colonies and nest in trees, underground, or in walls. Stingless bees produce a highly prized medicinal honey and are increasingly being domesticated through *meliponiculture*.



Honey Bees (HB) - Tanzania hosts three subspecies of the Western honeybee (*Apis mellifera*), each adapted to different environments. The most widespread is *Apis mellifera scutellata*, common in lowland areas and known for its productivity and defensiveness. In the highlands, the more relaxed *Apis mellifera monticola* thrives. *Apis mellifera litorea* occurs in the coastal regions.





APICULTURE AND MELIPONICULTURE



Honeybee colony inspection at Kaole Ruins

Apiculture in Tanzania is a traditional and increasingly commercial activity. Practiced across diverse regions it contributes to household income mainly through the production of honey and beeswax. Most hives are located in the forest, far away from any agriculture and with the potential of high quality honey! Mainly traditional log hives are used, though modern hives like the Tanzanian top-bar and Langstroth are gaining popularity.

Meliponiculture - is a growing practice in Tanzania, particularly in forested regions. Managing native stingless bee species, is an activity well-suited for close-to-home beekeeping. Their honey, though produced in smaller quantities, is highly valued for its medicinal properties and unique taste. Most beekeepers have only a few colonies and keep them as first aid boxes under the eaves of their houses.



Harvesting stingless bee honey on Mt. Meru

KISWAHILI FOR APITOURISTS

ENGLISH	KISWAHILI
Bee	Nyuki
Honeybees (big bee)	Nyuki wakubwa
Stingless bees (small bee)	Nyuki wadogo
Solitary bee	Nyuki pekee
Beekeeping	Ufugaji wa nyuki
Beekeeper	Mfugaji wa nyuki
Hive	Mzinga
Colony	Kundi
Queen	Malikia
Worker	Mfanyakazi
Drone	Mdume
Honey	Asali
Wax	Nta
Propolis	Gundi
Comb	Sega
Pollen	Chavua
Nectar	Nekta
Flower	Maua
Tree	Mti
Climbing	kupanda
Rope	Kamba
Smoke	Moshi
Danger	Hatari
Bee suit	Vazi la nyuki
Sun	Jua
Water	Maji
Forest	Msitu
It is safe	Ni salama
It is dangerous	Ni hatari!
I got stung	Nilichomwa na Nyuki
Are you afraid?	Je, unaogopa?
Yes, I am afraid	Ndio ninaogopa
No, I am not afraid	Hapana, siogopi
Good	Nzuri
Bad	Mbaya
Environment	Mazingira

APITOURISM

Tanzania is rich and proud of the natural and cultural heritage it has to offer. Millions of tourists visit every year to see the country's iconic wildlife and diverse landscapes. Bees and beekeeping are part of the nation's treasures worth sharing with the world. Many beekeeping communities are eager to welcome visitors interested in their practices, knowledge, and bee products. This is where Apitourism comes in, the combination of apiculture and tourism. Apitourism is still in its early stages - an emerging sector that is just starting to gain traction.

On the following pages, you will read about places that invite visitors for a bee-experience. It is a selection, a start and by no means comprehensive. Many more beekeepers are doing a fantastic job, hidden from the tourists' attention. Your Apitourism experience will be truly authentic and give insights into Tanzania's beekeeping culture. Become an Apitourist and explore Tanzania off the beaten path.



Visiting stingless bees is a very safe undertaking, because they are very gentle creatures. Honeybees on the contrary have a more defensive nature. Exploring an Apiary is a rewarding experience, but it is important to stay safe - especially when engaging in hands-on activities. Following basic safety guidelines ensures a safe and enjoyable visit for everyone.

1

FOLLOW THE INSTRUCTIONS of your guide and beekeepers. The beekeepers know their bees best!

2

KEEP A SAFE DISTANCE: Do not approach hives unless invited to do so.

3

If you are allergic to bee stings, please **INFORM YOUR GUIDE** and carry your prescribed medication. In some cases you might be far away from the next hospital so it is best to come prepared.

4

STAY CALM around bees, avoid swatting, move slowly and deliberately. **BUT** should you get stung, please **INFORM YOUR GUIDE** and **MOVE AWAY** from the area.

5

AVOID STRONG FRAGRANCES, bees can be attracted or agitated by perfumes, scented lotions, aftershave or even certain shampoos.

6

STAY HYDRATED AND PROTECTED, think about the shoes you want to wear, bring water and a hat - many places are outdoors and shade might be limited.



Overall, this guide covers 19 destinations. Most located in Northern Tanzania, and therefore very easily accessible along the touristic routes. To see a more comprehensive map, please scan this QR code and look for this icon.



APITOURISM HIGHLIGHTS



- 1 TANBEEES**
USAMBARA MOUNTAINS
page 11
- 2 ZANZIBEEES**
ZANZIBAR
page 18
- 3 HONEY ROAD**
CENTRAL TANZANIA
page 23
- 4 BEEKEEPING TRAINING INSTITUTE** *TABORA*
page 25
- 5 HADZA**
YAEDA VALLEY
page 27
- 6 WILD SURVIVORS**
NGORONGORO
page 31
- 7 BEETOPIA**
ARUSHA
page 37

APICULTURE MUSEUM



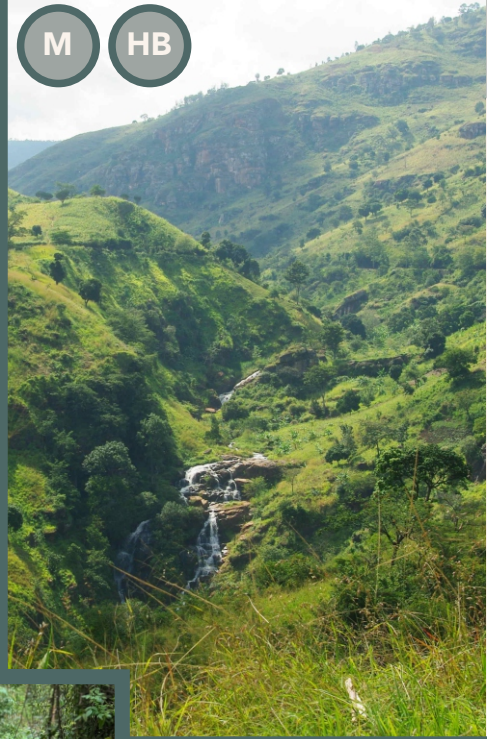
M

HB

Perched high in the Usambara mountain range, right next to the Magamba Nature Forest Reserve, lies a small bee museum. Emmanuel and his family warmly welcome visitors and local communities to discover the world of bees and the art of beekeeping.

You can simply explore the museum or suit up and get close to the bees and the apiary. If you have more time, dive into hands-on experiences like hive construction, beeswax candle making, or even tree planting.

Emmanuel will help you choose the activities that suit you best.



TIP

Combine the visit with a hike in the Magamba Nature Forest Reserve.



Ever heard of a puffball (*Langermannia whalbergi*) that puts bees to sleep? Burning this mushroom is traditionally used as an alternative to smoke.





TANBEES APICULTURE MUSEUM AND CHAMELEON SANCTUARY

LOCATION
LUSHOTO, USAMBARA MOUNTAINS

DURATION
2-4 HOURS

GROUP SIZE
BEST FOR UP TO 10

LANGUAGES
ENGLISH, KISWAHILI

CONTACT PERSON
EMMANUEL KAMENYA

CONTACT
+255744203104
tanbees24@gmail.com
https://visitusambara.com

BOOKING INFORMATION
YOU CAN JUST SWING BY, HOWEVER, BEST IS TO BOOK IN ADVANCE TO BE ON THE SAFE SIDE!

ACCOMMODATION
ANMUT HOSTEL IS A LOW BUDGET OPTION ON SITE.



Step into the heart of Swahili history with a beekeeping experience at the ancient Kaole Ruins. A serene and yet powerful reminder of East Africa's layered past. Just outside Bagamoyo — Kaole was once a vibrant trade hub and a departure port during East Africa's slave trade era. Explore the 13th-century stone ruins, coral mosques, and Shirazi tombs while also shifting your attention to the present: mangrove beekeeping. The coastal honeybee *Apis mellifera litorea* - which is slightly smaller than other honeybee races - produces a uniquely flavoured honey. Join local experts from Asilia African Honey and the Tanzanian Forestry Services to gain hands-on beekeeping experience in the mangrove ecosystems alongside the Indian ocean.





**KAOLE RUINS AND ASILIA
AFRICA HONEY BEE
EXPERIENCE**

LOCATION
BAGAMOYO

DURATION
1-3 HOURS

GROUP SIZE
BEST FOR UP TO 10, SPECIAL
ARRANGEMENTS FOR LARGER
GROUPS POSSIBLE

LANGUAGES
ENGLISH, KISWAHILI

CONTACT PERSON
REGINALD SARIA

CONTACT
+255 719 365 727
reginald.saria@gmail.com
www.asiliaafricahoney.com

BOOKING INFORMATION
IT IS RECOMMENDED TO BOOK
AT LEAST 2 DAYS IN ADVANCE.

OPENING END OF 2025

MBWENI MELIPONARY

M



FLAME LILY MBWENI MELIPONARY

LOCATION

DAR ES SALAAM

DURATION

1.5-2.5 HOURS

GROUP SIZE

BEST FOR 1-10

LANGUAGES

ENGLISH, KISWAHILI

CONTACT PERSON

THOMAS CHALE

CONTACT

+255 784 745 646

tchale17@gmail.com

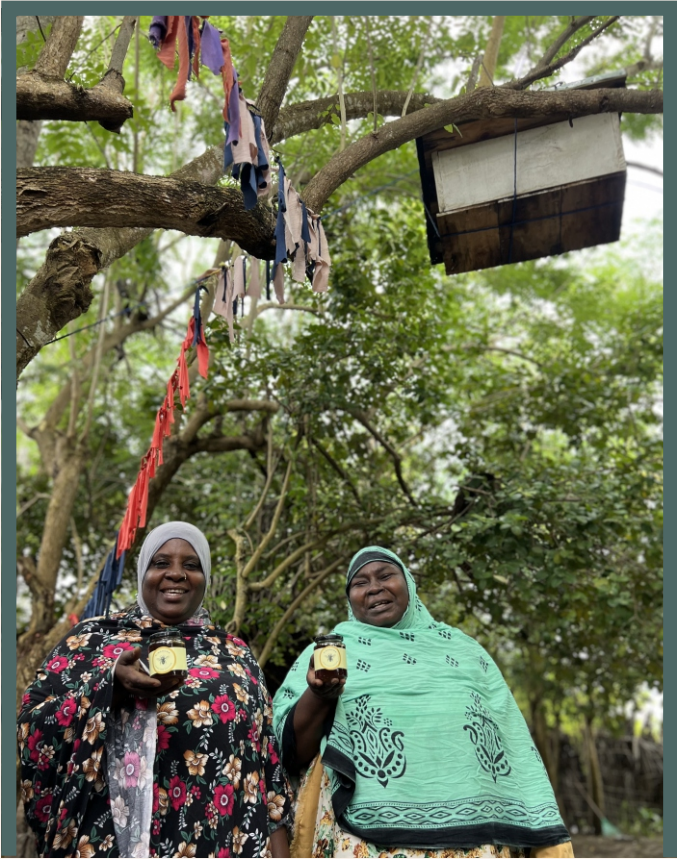
BOOKING INFORMATION

BOOK YOUR VISIT IN ADVANCE

Tucked into the suburbs of Dar es Salaam is a humble yet inspiring backyard sanctuary full of bees and blossoms. You will meet Mr. Thomas Chale, who tends his stingless bees with the same calm attentiveness they return in kind. The small garden overflows with native and ornamental flowers, planted not for show but purpose: to nourish pollinators and inspire others. This is not an overrun tourist site - it's a gentle, personal encounter with Tanzania's pollinators, guided by someone who believes in their quiet power. You can sample stingless bee honey and leave with more than a taste: a renewed appreciation for bees, and perhaps the spark to plant your own garden to attract pollinators.



In the heart of Kiwengwa village on Zanzibar's east coast lies a modest apiary tended by a dedicated group of local women. This small community project isn't about scale - it's about purpose, cooperation, and resilience. Nestled between homes, the buzzing hives offer a glimpse into how beekeeping can support both pollinators and livelihoods. It's an easy stop if you are passing through Kiwengwa, offering a quiet moment to learn how honey connects people, plants, and place. It's a meaningful backyard encounter - real, warm, and quietly powerful.



KIWENGWA HONEYBEE FARM

LOCATION

KIWENGWA, ZANZIBAR

DURATION

0.5 HOURS

GROUP SIZE

BEST FOR 1-10

LANGUAGES

ENGLISH, KISWAHILI

CONTACT PERSON

MUDRIK MASOUD AME

CONTACT

+255 788 008 627
<https://kiwengwahoneybeecottagezanzibar.com>

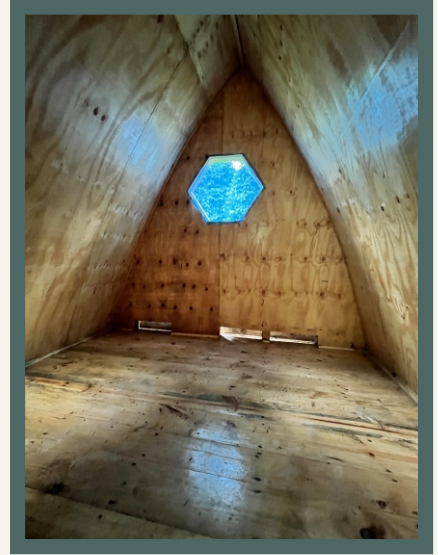
BOOKING INFORMATION

GIVE MUDRIK A CALL OR DROP A WHATSAPP MESSAGE IN ADVANCE TO MAKE SURE HE WILL BE ON SITE.





Zanzibees is more than an apiary—it's a story of transformation, rooted in science and sustained by passion. Founded by Abdallah, a trained medical doctor turned beekeeper, this project brings together apiculture, community health, and environmental education in one fragrant corner of Zanzibar. Set within a lush spice farm, Zanzibees hosts both honeybees and stingless bees, offering you a chance to explore the healing potential of bees - not only through their products, but through the deeper ecology they support. Whether you join for a beetour through the buzzing hives or visit the on-site clinic, you'll leave with more than just fun facts: you'll carry a sense of how interconnected well-being truly is.



Apitherapy...

...is the use of bee products - like honey, propolis, royal jelly, and wax - for health and wellness, often including aromatherapy and hive air inhalation

Zanzibar is home to a many different stingless bee species. The top picture shows a nest of bees that are only 3mm long.





ZANZIBES

LOCATION

MANGWAPANI, ZANZIBAR

DURATION

1-3 HOURS

GROUP SIZE

BEST FOR UP TO 10, SPECIAL ARRANGEMENTS FOR GROUPS POSSIBLE

LANGUAGES

ENGLISH, KISWAHILI

CONTACT PERSON

ABDALLAH SHABAN MUSA

CONTACT

+255 624 550 398

BOOKING INFORMATION

YOU CAN JUST COME AROUND, BUT IT IS RECOMMENDED TO BOOK IN ADVANCE.

ACCOMMODATION

AVAILABLE ON SITE

OPENING END OF 2025

PUGU KAZIMZUMBWI

SB

M

HB

Just outside the bustle of the big city lies the quiet, green refuge known as Pugu Hills - often called the lungs of Dar es Salaam. Here, the Tanzanian Forestry Service is developing an apitourism destination where conservation and education meet. Along winding forest paths, you can encounter the hum of bees woven into the fabric of the woodland: from solitary bees over stingless bees nesting to honeybees. This is more than a walk through nature - it's a journey into the living system that sustains the forest and the city beyond. In Pugu, bees are not just pollinators; they are the forest keepers.



TIP

Combine the visit with a canoe trip on Minaki dam.





PUGU KAZIMZUMBWI FOREST RESERVE

LOCATION
DAR ES SALAAM

DURATION
1-3 HOURS

GROUP SIZE
BEST FOR UP TO 10

LANGUAGES
ENGLISH, KISWAHILI

CONTACT
+255 765 042 597
+255 743 689 667

BOOKING INFORMATION
<https://emisitu.tfs.go.tz>
AT THE ENTRANCE GATE

ACCOMMODATION
CAMPING AVAILABLE IN THE FOREST RESERVE

OPENING END OF 2025

SWAHILI HONEY

HB



SWAHILI HONEY

LOCATION

DODOMA

DURATION

1.5-2 HOURS

GROUP SIZE

BEST FOR UP TO 10

LANGUAGES

ENGLISH, KISWAHILI

CONTACT PERSON

ELLICE JEREMIA

CONTACT

SCAN FOR
CONTACT
INFORMATION



BOOKING INFORMATION

YOU CAN EITHER JUST SWING
BY OR BOOK YOUR VISIT IN
ADVANCE TO BE ON THE SAFE
SIDE.

In the heart of Tanzania's capital, Swahili Honey combines cutting-edge honey processing with deep community roots. The enterprise connects with a vast network of beekeepers across central and southern Tanzania. The honey - harvested from some of the most pristine forests - is brought to Dodoma, where it's carefully processed and packaged in a state-of-the-art facility that meets international quality and export standards. But behind the sleek production is a commitment to ecological responsibility, and community empowerment. A visit here offers insight into how traditional forest beekeeping can thrive in the modern market.



KIJIJI CHA NYUKI HB

Amid the huge boulders that define Singida's landscape lies Kijiji cha Nyuki - the Bee Village - where bees are more than pollinators; they're part of the cultural identity. Here, the Mr. Kiemi has created a space that celebrates the connections between local communities and bees, expressed through traditional music, art, and storytelling.



KIJIJI CHA NYUKI - IFONEO

LOCATION

SINGIDA

DURATION

1-4 HOURS

GROUP SIZE

BEST FOR UP TO 10, SPECIAL ARRANGEMENTS FOR GROUPS POSSIBLE

LANGUAGES

ENGLISH, KISWAHILI

CONTACT

PHILEMON JOSEPHAT KIEMI
+255 765 895 805
+255 656 104 141

BOOKING INFORMATION

IT IS RECOMMENDED TO BOOK IN ADVANCE.

ACCOMMODATION

AVAILABLE ON SITE



KIJIJI VILLAGE

NYUKI BEE(S)



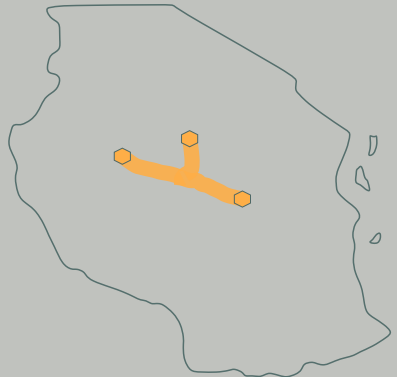


As you drive through central Tanzania, keep an eye on the treetops - traditional beehives hang high among the branches, swaying gently in the breeze. This striking landscape, where hives seem to grow from the trees, is a testament to the region's pumping beekeeping culture. It is a scenic drive where nature and human craft blend seamlessly, and every hive is a quiet reminder of the honey being harvested.

Along the roadsides, you can spot bottles of golden honey often glinting in the sun - a sweet invitation to stop and sample. These informal stalls are part of everyday life and offer honey sourced from nearby forests or villages. While sellers are usually not the beekeepers and may not know every detail about the product, you can often taste before you buy and discover rich, regional flavors. Quality may vary, but that's part of the adventure. Buying roadside honey supports the local economy and offers a direct, flavorful connection to the land you're traveling through.



- ASALI MBICHI** RAW HONEY
- DUKA LA ASALI** HONEY SHOP
- ASALI YA SEGA** COMB HONEY
- PATA ASALI** GET HONEY



SCENIC DRIVE THROUGH BEE COUNTRY

DISTANCES [KM]

	TABORA	MANYONI	SINGIDA	DODOMA
TABORA		257	329	381
MANYONI			119	125
SINGIDA				244

DO YOU WANT TO BUY SOME HONEY ON THE ROAD SIDE?

CHECK PAGE 40 FOR SOME HELPFUL KISWAHILI PHRASES



BEEKEEPING TRAINING INSTITUTE

Set in the heart of Tanzania's iconic Miombo woodlands, the Beekeeping Training Institute in Tabora carries a legacy that stretches back decades. Once a pioneering bee research center, it now trains the next generation of Tanzanian beekeepers - blending tradition with modern techniques. You are welcomed into an atmosphere of learning, where both instructors and students generously share their knowledge and passion for apiculture. It's a place where the buzz of bees meets the buzz of ideas, all based in one of Tanzania's most historical beekeeping regions.



TIP

Combine the visit with a walk through Tabora Town. The streets are lined with Mango trees, a sign for the towns importance in trade history. You might also want to visit the Livingstone Museum 8 km out of town.



BEEKEEPING TRAINING INSTITUTE

LOCATION
TABORA

DURATION
1-3 HOURS

OPENING HOURS
MONDAY - FRIDAY 9AM-5PM

GROUP SIZE
BEST FOR UP TO 10

LANGUAGES
ENGLISH, KISWAHILI

CONTACT
Mr. Semu Daud
+255 754 928 934
<https://bti.ac.tz>

BOOKING INFORMATION
IT IS RECOMMENDED TO GIVE A HEADS UP.



CHUO
COLLEGE

MAFUNZO
TRAINING

UFUGAJI
NYUKI
BEEKEEPING





In the sweeping grasslands and ancient baobab groves of the Yaeda Valley, the Hadza people - one of the last remaining hunter-gatherer communities in the world - carry forward a way of life shaped by deep ecological knowledge. Among the most cherished elements of their diet is honey. To reach the colonies, men climb into the towering baobabs that dominate the landscape.

Visiting the Hadza offers you a rare glimpse into a culture where bees are not farmed, but found. Honey from seven bee species is searched for and enjoyed if the opportunity presents itself. You can participate in this experience through the longstanding partnership between the Hadza and the Dorobo Fund, which supports land protection and cultural resilience. With Dorobo Safari's trusted guides, you will be welcomed with care and sensitivity - ensuring that cultural tourism is conducted on Hadza terms, and with the utmost respect.

HADZA NAMES FOR THE MOST COMMON BEES:

AWAWA

HONEYBEE (*APIS
MELLIFERA*)

NI!ATEKO

STINGLESS BEE
(*MELIPONULA
FERRUGINEA*)

KANOWA

STINGLESS BEE
(*HYPOTRIGONA SP.*)





HADZA - HUNTER GATHERER IN THE YAEDA VALLEY

LOCATION

YAEDA VALLEY VIA KARATU

DURATION

2-4 DAYS

GROUP SIZE

BEST FOR UP TO 10

LANGUAGES

ENGLISH, FRENCH, KISWAHILI

CONTACT

dorobo@dorobosafaris.com

BOOKING INFORMATION

CONTACT DOROBO SAFARIS TO PLAN YOUR WHOLE VISIT TO TANZANIA OR A WELL PLANNED TRIP THAT COMPLEMENTS YOUR ITINERARY



DOROBO
TOURS & SAFARIS LTD

BEE HAVEN TANZANIA

SB

M



BEE HAVEN TANZANIA

LOCATION

ROTHIA, NEAR KARATU

DURATION

1-2 HOURS

GROUP SIZE

BEST FOR 1-10

LANGUAGES

ENGLISH, KISWAHILI

CONTACT PERSON

STEPHEN MARCO

CONTACT

stevenmarko48@gmail.com

+255 757 813 113

BOOKING INFORMATION

LET STEPHEN KNOW THAT YOU ARE COMING

Just outside the iconic Ngorongoro Crater, Stephen Marco - also known as Mr. Honeybee - has turned his garden into a true haven for native bees. With a deep love for solitary and stingless species, he has created a bee refuge filled with flowers, nesting sites, and gentle care. This small, peaceful spot isn't about production - it's about protection. You are welcomed into a space where bees of all kinds can simply be, and where Stephen's quiet dedication speaks volumes about the beauty of coexistence.



KAMBI YA NYUKI



On the forested slopes of the Ngorongoro Crater, bordering the Conservation Area, Mzee Paulo keeps bees using methods passed down through generations. His apiary feels like a living archive of traditional beekeeping, with some log hives still in use after more than 30 years. These heavy, hollowed trunks reflect a time when beekeeping worked closely with the natural landscape. Apiculture evolved and Mzee Paulo adapted by crafting new hives from wooden planks and old tractor tyres. The result is a living example of how traditional knowledge and creative problem-solving can thrive together.



KAMBI YA NYUKI GILALA HILLTOP LODGE

LOCATION
GILALA, NEAR KARATU

DURATION
2-4 HOURS

GROUP SIZE
BEST FOR 1-10

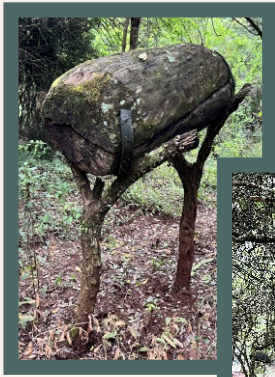
LANGUAGES
ENGLISH, FRENCH, KISWAHILI

CONTACT PERSON
JACQUELINE

CONTACT
+255 688 347 188

BOOKING INFORMATION
PLEASE LET GILALA HAI KNOW THAT YOU ARE COMING - THEY CAN ARRANGE EVERYTHING FOR YOU.

ACCOMMODATIION
GILALA HILLTOP OFFERS ACCOMMODATION WITH VIEWS TO THE NGORONGORO CRATER



KAMBI CAMP
NYUKI BEE(S)

In Upper Kitete, waits a conservation-in-action experience. The farming community faces the challenges of human wildlife interactions: elephants with a taste for crops. Wild Survivors is working with the communities to mitigate the risks for human and elephants. Who would have thought that bees can help? Along the boundary beehives are suspended from wires, full of honeybees, ready to protect their homes and the farms if an elephant dares coming too close. The honey that is harvested is further processed by women groups that add value to the product. In this way, the project has manifold advantages: elephants are kept at bay, farmers can harvest more of their crops and honey. And the bees? They win in appreciation! You won't spot elephants, but gain insight into the complex realities of living alongside these grey giants - and the creative ways that help people coexist with wildlife.





WILD SURVIVORS

LOCATION
UPPER KITETE

DURATION
3 HOURS

GROUP SIZE
BEST FOR 2-10

LANGUAGES
ENGLISH, KISWAHILI

CONTACT
JOHN MASALU
+255 625 832 603
hello@wildsurvivors.org

BOOKING INFORMATION
GIVE WILD SURVIVORS A HEADS-UP FOR A VISIT, YOU NEVER KNOW, THEY MIGHT BE BUSY FARMING OR TRACKING ELEPHANTS.





MAMA ASALI

HB

TANZANIA PEOPLE AND WILDLIFE

LOCATION

MSWAKINI CHINI

DURATION

1-2 HOURS

GROUP SIZE

BEST FOR UP TO 10

LANGUAGES

ENGLISH, KISWAHILI

CONTACT PERSON

SAMSON BEAH

CONTACT

info@africanpeoplewildlife.org

BOOKING INFORMATION

africanpeoplewildlife.org/honey



**Tanzania People
& Wildlife**

At Mama Asali, the focus is on women empowerment through community-based beekeeping. Visitors can join the ladies on a walk through the nearby community-managed forest, home to the honeybee colonies they care for. Soon, a new honey processing center will open its doors, offering tastings and an opportunity to learn how this locally led project supports both women's livelihoods and the conservation of the surrounding ecosystem.



OPENING END OF 2025

TAWIRI

HB

M

Located within an urban forest in Arusha, the Tanzania Wildlife Research Institute (TAWIRI) offers an Apitourism experience focused on bee research and conservation. The institute manages numerous bee colonies within the forest, and has developed a dedicated laboratory to support the beekeeping sector, focusing on honey quality assurance. In addition, the institute maintains a large and growing collection of bee specimens and other pollinators from across Tanzania and beyond, supporting research on bee diversity and conservation. The institute is open to tourists, researchers, students and anyone interested in the role of bees in ecosystems and pollination.



TAWIRI - TANZANIA WILDLIFE RESEARCH INSTITUTE

LOCATION

ARUSHA

DURATION

1-2 HOURS

GROUP SIZE

BEST FOR UP TO 10

LANGUAGES

ENGLISH, KISWAHILI

CONTACT

barua@tawiri.or.tz

+255 734 094 646

BOOKING INFORMATION

IT IS RECOMMENDED TO BOOK IN ADVANCE.



OPENING END OF 2025



BEEWONDERS



High up on the slopes of Mt Meru, Tanzania's second highest volcano, this enterprise allows for a little timetravel. The small museum exhibits beekeeping equipment that tell stories from the past and are testament to the innovation that has shaped beekeeping in Tanzania. A walk along the steep slopes into the apiary leaves you with a deep appreciation for the beekeepers work under often difficult conditions.

BEEWONDERS INVESTMENT FOR NATURE CO. LTD.

LOCATION

TENGERU

DURATION

1-2 HOURS

GROUP SIZE

BEST FOR 1-10

LANGUAGES

ENGLISH, KISWAHILI

CONTACT

+255 735 843 550

BOOKING INFORMATION

IT IS RECOMMENDED TO GIVE THE TEAM A HEADS-UP



MAMA ELINURU

M

Mama Elinuru is also known as 'Mama Shujaa wa Chakula' - a food hero. In her garden she practices the principles of the famous Chagga Home Gardens - a multistory cropping approach to farming that is regenerative and holistic. And the best: it includes stingless bees. At this homegarden you can enjoy a variety of different heritage foods and witness how this impressive women is educating and empowering those around her.



ELINURU FOUNDATION

LOCATION

TENGERU

DURATION

1-3 HOURS

GROUP SIZE

BEST FOR UP TO 10

LANGUAGES

ENGLISH, KISWAHILI

CONTACT PERSON

ELINURU MOSES PALLANGYO

CONTACT

+255 787 577 213

BOOKING INFORMATION

IT IS RECOMMENDED TO BOOK IN ADVANCE.

SHUJAA HERO

CHAKULA FOOD

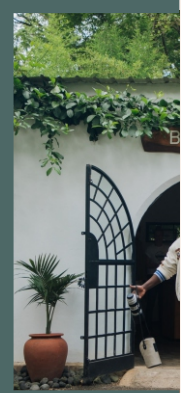


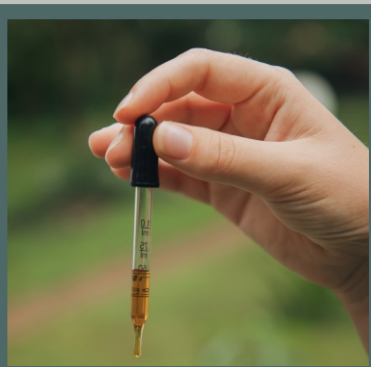
Ever considered the world of bees beyond honeybees? At Beetopia, every bee has a place. Nestled on the edge of Arusha National Park this sanctuary celebrates diversity and especially the fascinating stingless bees. Step into their hidden world and discover how these gentle pollinators play a vital role in sustaining ecosystems!

The center's strength is the combination of research, conservation and education. It works closely with stingless beekeepers with whom they work towards sustainable beekeeping practices and bee-friendly farming. Schools come to this outdoor classroom and learn in a friendly environment filed with fun facts mixed with deep knowledge. Scientists from around the world are also invited to help gaining more knowledge around bees.

And you? You are welcome to go beyond the surface and explore the heart of this buzzing community.

On a private tour, you get first hand information from the enthusiastic experts, taste the flavours of different honeys and enjoy the center's signature drink: a refreshing honey soda!





BEETOPIA - CENTER FOR THE CONSERVATION OF BEES THROUGH RESEARCH AND EDUCATION

LOCATION
USA RIVER

DURATION
1-6 HOURS

GROUP SIZE
BEST FOR UP TO 10

LANGUAGES
ENGLISH, GERMAN, KISWAHILI

CONTACT PERSON
WARREN STEYN
DR. KATHRIN KRAUSA

CONTACT
+255 659 523 791
info@beegreen.co.tz
https://beegreen.co.tz
@beetopia_tz

BOOKING INFORMATION
ALL TOURS ARE EXCLUSIVE,
PLEASE MAKE A BOOKING

SCAN THIS FOR MORE INFOS



NGARONY BEE MAN

M



Barakael M Nkini, better known as BM, the Bee Man resides on the western slopes of the majestic Mt. Kilimanjaro. He truly mastered the art of stingless beekeeping like no one else. What started more than 30 years ago with 3 colonies has grown to the largest meliponary in Tanzania, East Africa and possibly the hole continent. Meet this humble and yet very impressive man and be inspired by his love for stingless bees.

NGARONY

LOCATION

SANYA JUU

DURATION

1-3 HOURS

GROUP SIZE

BEST FOR 2-15

LANGUAGES

KISWAHILI, IDEALLY COME WITH A GUIDE TO TRANSLATE

CONTACT PERSON

BARAKAEL M. NKINI

CONTACT

+255 754 460 332

BOOKING INFORMATION

PLEASE BOOK IN ADVANCE.



OPENING END OF 2025

KISWAHILI FOR APITOURISTS

ENGLISH

KISWAHILI

Welcome	Karibu
Hello	Jambo / Sijambo (response)
How are you? Good.	Habari yako? / Nzuri (response)
Please	Tafadhali
I am sorry	Samahani
Thank you	Asante (sana)
Are you a beekeeper?	Je, wewe ni mfugaji?
I am a beekeeper	Mimi ni mfugaji nyuki
Do you also keep stingless bees?	Je, unafunga pia nyuki wadogo?
How many hives do you have?	Je, una mizinga mingapi?
I have twenty hives.	Nina mizinza ishirini
I would like to buy some honey	Ningependa kununua asali
How much is this?	Hii ni bei gani?
Yes	Ndio
No	Hapana

Swahili time is based on the sunrise and sunset, not midnight like in Western time. In most parts of East Africa, the sun rises around 6 am and sets around 6 pm. In Swahili time starts counting hours from sunrise.

1 moja	10 kumi
2 mbili	100 mia
3 tatu	1000 elfu
4 nne	2000 elfu mbili
5 tano	100,000 laki
6 sita	1,000,000 milioni
7 saba	
8 nane	
9 tisa	



Tanzania - widely known for its breathtaking natural beauty, rich wildlife, and vibrant cultural heritage. Home to iconic safari destinations like the Serengeti, Ngorongoro crater, Mount Kilimanjaro, white-sand beaches and bees.

Yes, bees.

Come and visit, become an Apitourist and explore Tanzania off the beaten path.

Scan this to see a map



Do you know an Apitourism place that is not yet on the map?

Let us know

info@beegreen.co.tz



Funded by
the European Union



Ministry of Natural Resources
and Tourism